

Model C12.0 Medium Voltage Current Transformer
Maximum System Voltage 25.5kv, BIL 125 kV full wave



- **UL and cUL Recognized**
- **As per ANSI/IEEE C57.13 OR IEC 60044 OR relevant standard**

TABLE

PRIMARY CURRENT	SECONDARY CURRENT	ACCURACY	BURDEN
UP TO 1000A	5A OR 1A	AS PER ANSI	AS PER ANSI
		AS PER IEC	AS PER IEC

- **Contact us for specific p/n and for specific details from the table above**
- Relaying Accuracy of T100 CT can have metering accuracy of 0.6B1.8
- Relaying Accuracy of T200 CT can have metering accuracy of 0.3B1.8

INSULATION LEVEL

25.5 Kv, BIL 125 Kv full wave

FREQUENCY

50-400 Hz

CONTINUOUS THERMAL CURRENT RATING FACTOR

1.5 @ 30 deg. C ambient

1.33 @ 55 deg. C ambient

OUTER ENCAPSULATION

Polyurethane/Epoxy Resin Encapsulated

PRIMARY WINDOW

Custom sizes and shapes available. Standard window shape is round.

SECONDARY TERMINALS

10-32 Brass screw with one flat washer and lock washer

APPROX. WEIGHT

T100 – 95 lbs.

T200 – 115 lbs.

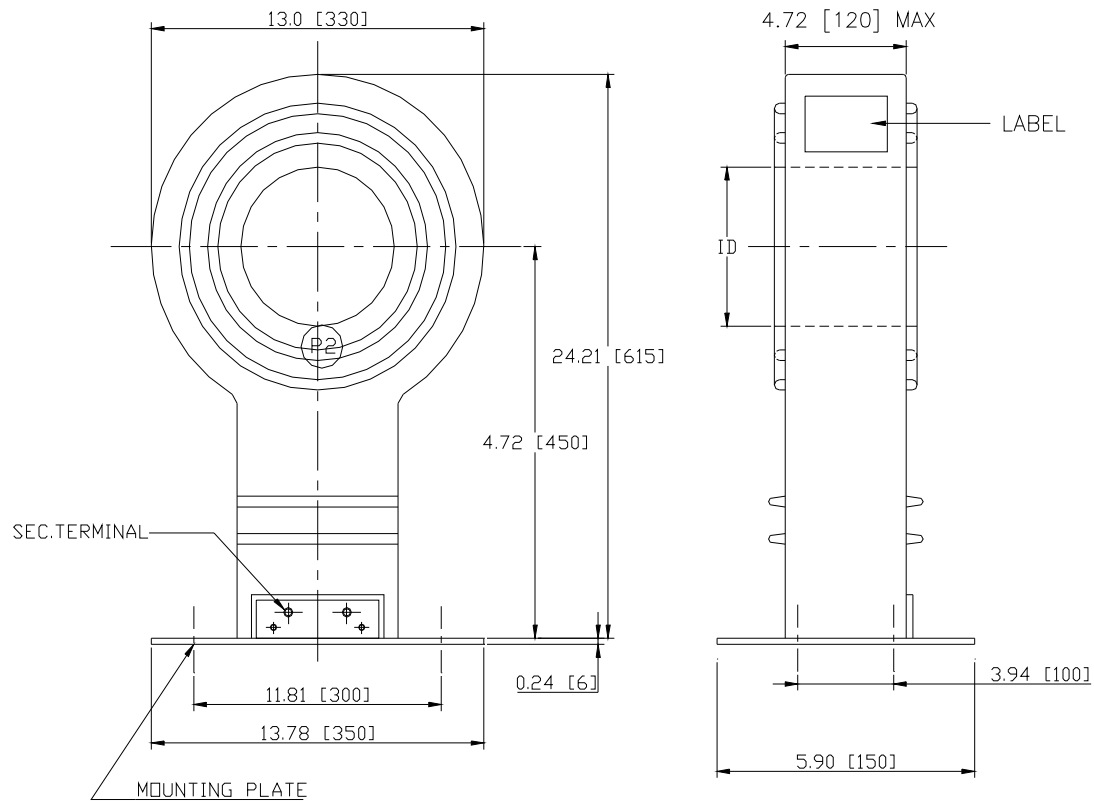
PLATED STEEL MOUNTING BASE

Mounting holes/dimensions as per customer requirement at no additional cost

CUSTOM OPTIONS (CONTACT US)

- Different Ratios, Accuracies
- Non-standard thermal rating
- Different encapsulation
- Different secondary termination
- Special mounting needs etc.

- DIMENSIONS**



All dimensions are in inches [mm]