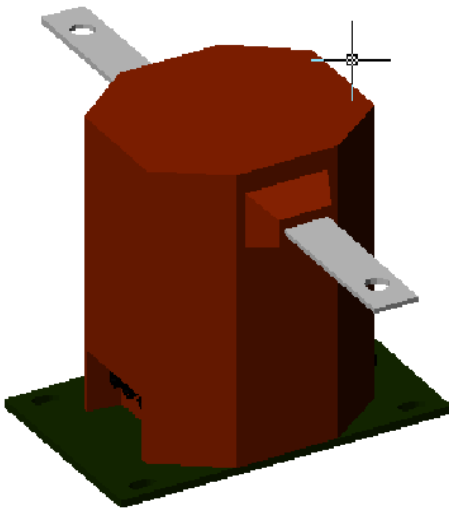


**Model C7.0 – C7.5 Medium Voltage Current Transformer**  
**Maximum System Voltage 15.5kv, BIL 110 kV full wave**



- **UL and cUL Recognized**
- **As per ANSI/IEEE C57.13 OR IEC 60044 OR relevant standard**

**INSULATION LEVEL**

15.5 Kv, BIL 110 Kv full wave

**FREQUENCY**

50-400 Hz

**CONTINUOUS THERMAL CURRENT RATING FACTOR**

1.5 @ 30 deg. C ambient

1.33 @ 55 deg. C ambient

**OUTER ENCAPSULATION**

Polyurethane/Epoxy Resin Encapsulated

**PRIMARY TERMINALS**

Plated copper bars

**SECONDARY TERMINALS**

10-32 Brass screw with one flat washer and lock washer

**APPROX. WEIGHT**

75 lbs.

**PLATED STEEL MOUNTING BASE**

Mounting holes/dimensions as per customer requirement at no additional cost

**CUSTOM OPTIONS (CONTACT US)**

- Different Ratios, Accuracies
- Non-standard thermal rating
- Different encapsulation
- Different secondary termination
- Special mounting needs etc.

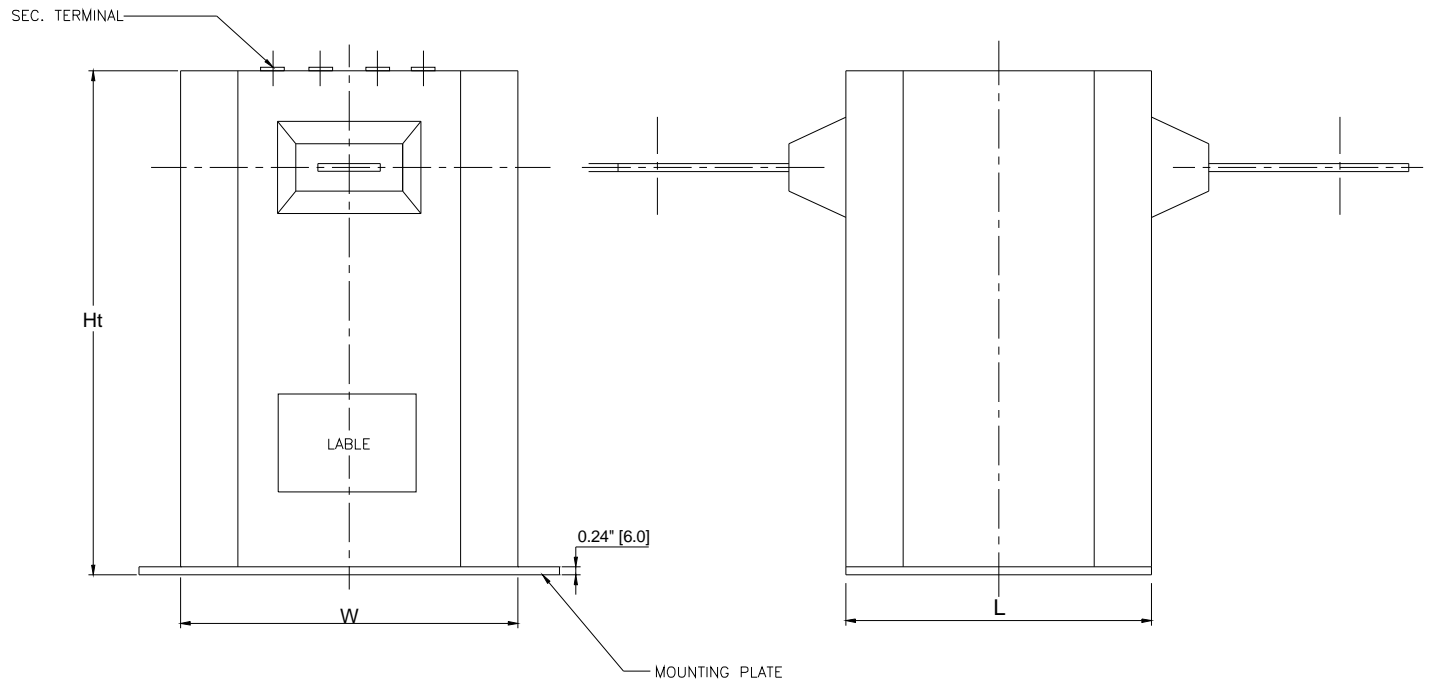
• **TABLE:**

PRIMARY CURRENT	SECONDARY CURRENT	ACCURACY	BURDEN
UP TO 2000A	5A OR 1A	AS PER ANSI	AS PER ANSI
		AS PER IEC	AS PER IEC

- **Contact us for specific p/n and for specific details from the table above**
- Relaying Accuracy of T100 CT can have metering accuracy of 0.6B1.8
- Relaying Accuracy of T200 CT can have metering accuracy of 0.3B1.8

**Model C7.0 – C7.5 Medium Voltage Current Transformer**  
Maximum System Voltage 15.5kv, BIL 110 kV full wave

• **DIMENSIONS**



MODEL NUMBER	DIMENSIONS ( INCHES [MM] )		
	W	L	Ht
C7.0	6.10 [155]	8.85 [225]	8.46 [215]
C7.1	6.10 [155]	3.94 [100]	8.46 [215]
C7.2	6.10 [155]	5.90 [150]	8.46 [215]
C7.3	6.10 [155]	7.87 [200]	8.46 [215]
C7.4	6.10 [155]	9.84 [250]	8.46 [215]
C7.5	5.90 [150]	8.85 [225]	8.46 [215]